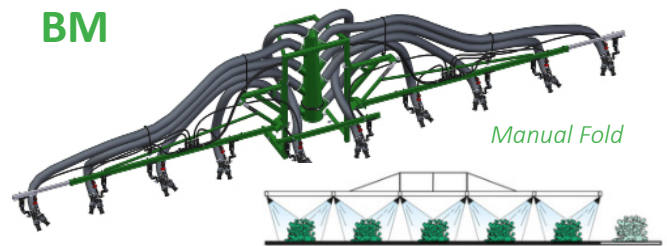


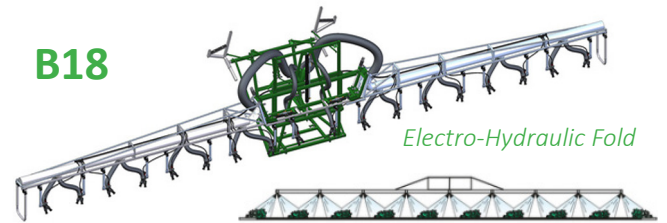
CIMA's air booms are designed to spray in dense foliage row crops, with air movement allowing chemical to completely cover vegetation, including the underside of leaves. Low volume targeted nozzles allow minimal drift while getting between 5 and 15 acres per gallon. Booms are able to be raised and lowered to accommodate different crop heights and nozzles are adjustable in width and angle to ensure maximum coverage.

Ideal for: strawberries, potatoes, tomatoes, sugar beets, beans, cabbage, broccoli, cotton, celery, peppers, artichoke, and a variety of other row crops.

BM

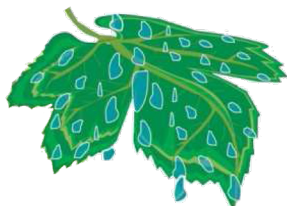


B18



MODEL	Sprayer	Width	Rows	Outlets	Nozzles/Outlet	Electric Valves
BM08.2.66.42.13	P42	16.5'	4	8	2	Optional
BM08.2.66.45.13	P45	16.5'	4	8	2	Optional
BM10.2.66.45.13	P45	23'	5	10	2	Optional
BM10.2.66.50.13	P50	23'	5	10	2	Optional
B18.2.66.50.15	P50	39'	9	18	2	Standard
B18.2.66.55.14	P55	39'	9	18	2	Standard
B18.2.66.55.15	P55	39'	9	18	3	Standard

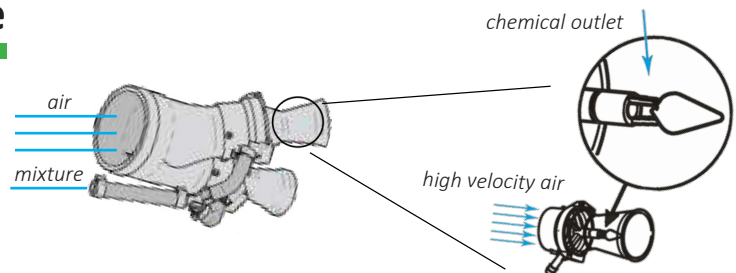
The CIMA Advantage



High Volume Sprayer



Low Volume CIMA Sprayer



CIMA's Low Volume sprayers create droplets of 100-150 μ , while standard high pressure sprayers commonly make droplets of 250-400 μ . Breaking down the liquid into smaller droplets allows for better coverage, more even distribution, and allows appropriate application without soaking your crop. The low volume system coats all surfaces of the system with air speeds around 170-200 MPH, achieving maximum coverage and a cleaner crop.